

GCL-GCX

LIGHT-DUTY COUNTER DOOR OPERATOR



The GCL-GCX is designed for rolling counter doors that have a limited-duty cycle requirement. The GCX comes with advanced features and is available in a fire-door version that raises the bar in counter door operation.

UL 325 Listed

- Allows for monitored entrapment connections for protection and momentary operation when used with select photoeyes and/or edge-sensing devices.
- See back for approved list of monitored devices.

GCL-GCX Advantages

- Modular design with optional expansion boards for timer to close*, edge sensing module* and auxiliary output functionality.
- Worm gear primary drive reduction provides inherent mechanical braking.
- Completely enclosed drive allows for mounting below 8 feet; maintains UL 325 compliance.
- Motor with built-in thermal protection.
- LCD display with intuitive setup menu. Provides real-time status and troubleshooting assistance.
- Open/close/stop and setup keys included on control board. Keeps all setup controls near the LCD display convenient for set up.
- EZ Limit® provides for push to set limits that remain synchronized with door even during loss of power and mechanical drops on fire-door versions.

**Advanced timer to close and edge sensing module are not available on the fire door version.*



Standard Features

- Limited-duty 4 cycles per hour rating.
- Max run timer automatically adjusts to up and down run time.
- Worm gear primary reduction.
- Delay on reverse.
- 16-character LCD display.
- 3-button control station.
- 2-year/20,000-cycle warranty.
- Programmable mid-stop.
- Pull cord release for emergency manual operation.



GCL-GCX | LIGHT-DUTY COUNTER DOOR OPERATOR

MAX DOOR SIZE (SQ*FT) - ROLLING

Door Series		Steel Non-Insulated						Steel Insulated			Counter Doors		Grilles		FireStar2™ Slat		FireStar3™ Slat
Model	Max Door Wt. (lbs.)	16GA.	18GA.	20GA.	22GA.	24GA.	26GA.	18GA.	20GA.	22GA.	Aluminum	STL/SST	Aluminum	STL/SST	20GA.	22GA.	16-22GA.
GCX	500	N/A	N/A	144	144	144	144	N/A	N/A	N/A	126*	126*	142	108	82	94	N/A

Notes: * Under-balanced fire shutters have a max square footage of 52 square feet for 22 gauge steel and 42 square feet for 20 gauge steel.

Construction

- Motor**
 1/2 HP, AC capacitor start/run motor. Motor replaceable without changing limits.
- Drive**
 Primary reduction is worm gear. Secondary reduction is by hardened bevel gear. Powertrain incorporates oil-impregnated bushings.
- Governor (Fire Door Version Only)**
 Included on fire door operator version. Controls the descent to door in a non-powered alarm/test drop.
- Emergency Manual Operation**
 Pull cord disconnect disengages drive allowing door to be moved manually while maintaining limits.
- Pre-wired to accept:**
 - Monitored entrapment device such as photoeyes.
 - Single or 3-button control stations.
 - External interlock switches.

Accessories and Options

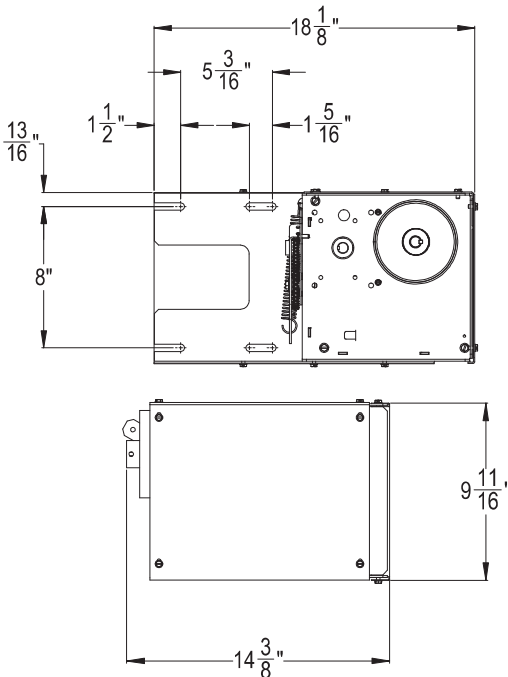
- Hand Crank**
 Allows for opening/closing via hand crank. Option only available on counter-door models.
- Timer Close Module****
 Timed close set via the LCD display from 2 seconds up to 5 minutes. Includes pre-close warning contacts, timer hold input, auxiliary open input, normally closed safety input, and monitored edge input.
- Auxiliary Output Module (standard on fire door version)**
 Provides relay contacts at the open, close, and mid-stop limits. Contacts for 5-minute lamp, and "ADA" contacts set via LCD display to warn during opening, closing or both.
- UL 325 Approved Reversing Devices**
 The installation of a monitored external entrapment device is required for momentary contact close operation on all commercial door operators. Only the following devices, when purchased through Genie, are UL Listed for use to meet this requirement:
 - Safe-T-Beam® Photoeye Kit with adjustable bracket P/N 38176R.S¹
 - Impact-protected Commercial Photoeye Kit P/N OPAKPE2.S
 - MillerEdge ME/MT/CPT (DC or T3) 2-wire edge sensor. Must be used with TCM (OPABTCGX.S**), ESM (OPABEIX.S**), or Interface Module (OPAKMEIGX.S).
 - NEMA 4X Photoeyes P/N OPAKPEN4GX.S
 - Light Curtain 3 ft. length P/N OPAKMLC3.S, or 6 ft length P/N OPAKMLC6.S

¹ — Default device when operator is ordered.

** — Not available on fire-door version.

AMPERAGE RATING - 60Hz

HP	115V 1Ø
1/2	6.0



The Genie Company, One Door Drive, Mt. Hope, Ohio 44660

www.geniecompany.com/commercial | 1.800.843.4084

Item G001.0050 (Rev. 03/22) 275 03/22 JAR

YOUR GENIE PROFESSIONAL DEALER:

© 2022 The Genie Company. Genie and the Genie logo are registered trademarks of GMI Holdings, Inc., d/b/a The Genie Company. Consistent with our policy of continuing product improvement, we reserve the right to change product specifications without notice or obligation.